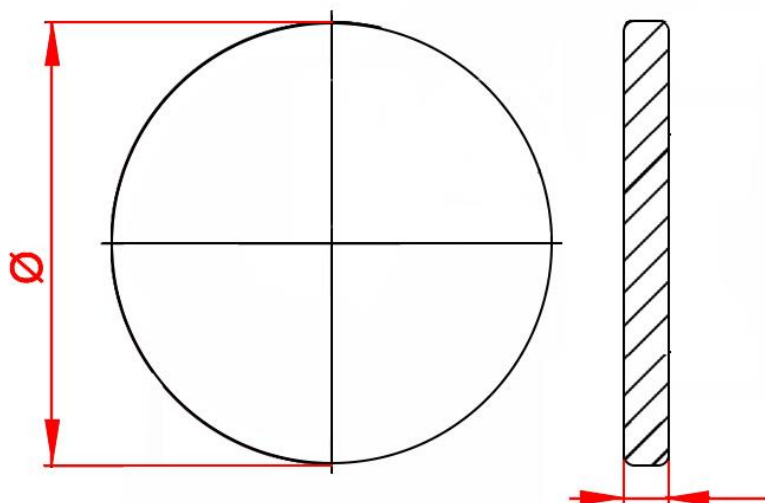
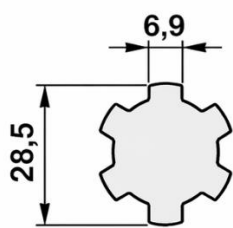


TEHNIČNI LIST - DIMENZIJE

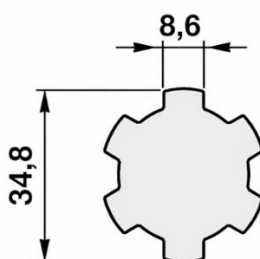
KARDANSKI ADAPTER S PRIROBNICO



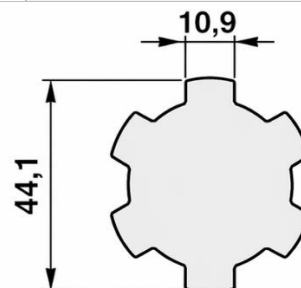
| ŠIFRA | NOTRANJI PROFIL | PRIROBNICA \varnothing (mm) | FLANGE THICKNESS (mm) | TOTAL LENGTH (mm) |
|--------|--------------------|-------------------------------|-----------------------|-------------------|
| 100229 | 1" 3/8 - 6 spline | 120 | 10 | 80 |
| 14824 | 1" 3/8 - 21 spline | | 12 | |
| 14823 | 1" 3/4 - 6 spline | 150 | 10 | |
| 12182 | 1" 3/4 - 20 spline | | 12 | |



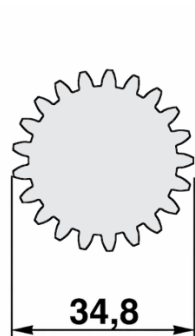
1"1/8 Z=6



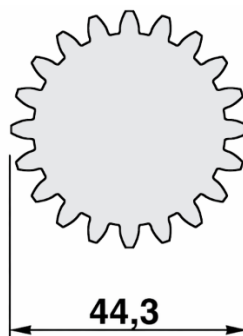
1"3/8 Z=6



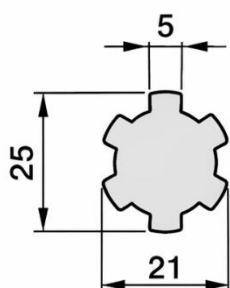
1"3/4 Z=6



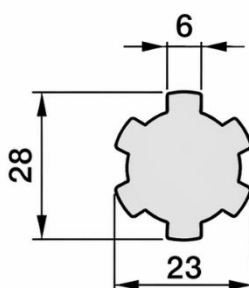
1"3/8 Z=21



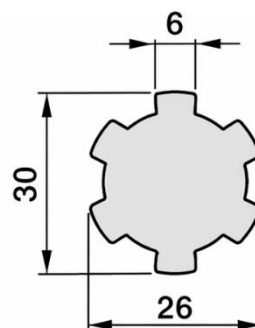
1"3/4 Z=20



21 UNI221 Z=6



23 UNI221 Z=6



26 UNI220 Z=6